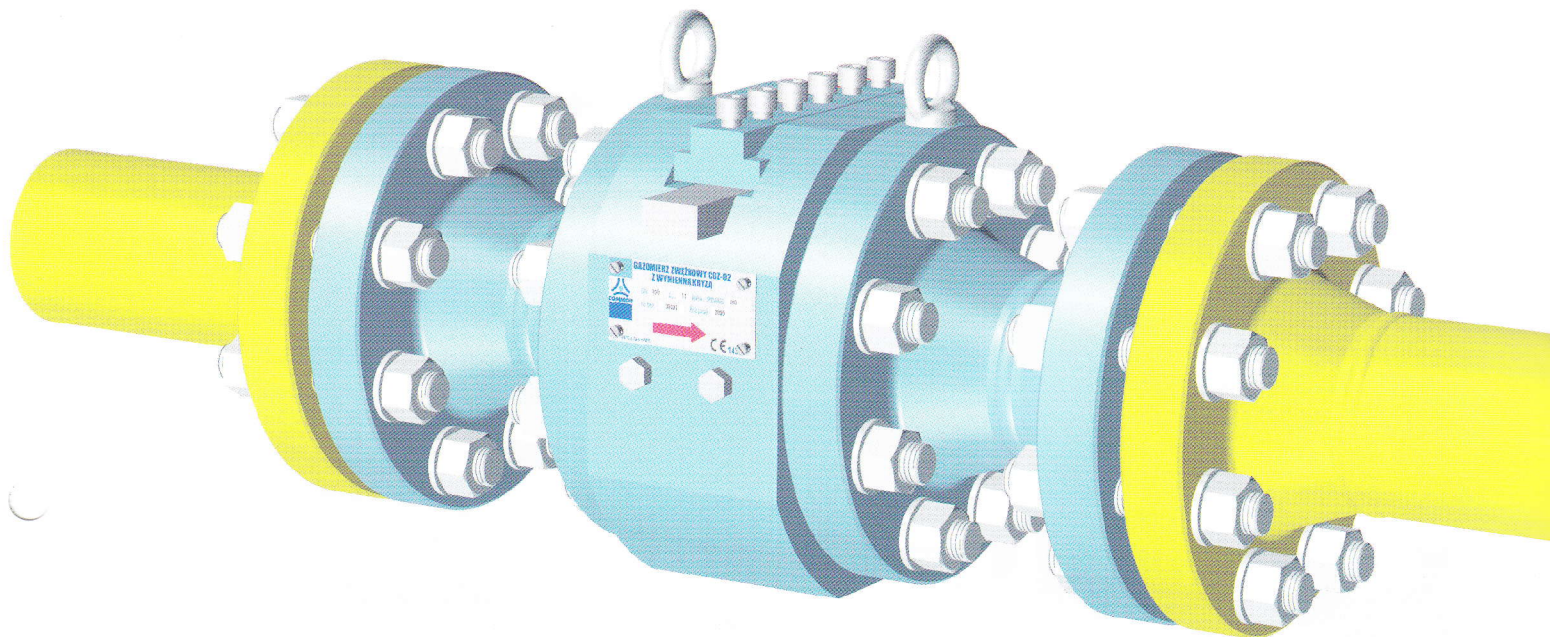




CGZW SINGLE CHAMBER ORIFICE FLOWMETER WITH REMOVABLE ORIFICE PLATE



The CGZW Orifice Flowmeters are designed for volume measurement of flowing gas, and may be used for the following purposes:

- custody transfer measurements of flowing gas,
- flow measurements in transmission and distribution gas pipelines,
- control measurements of flowing gas.

The operating principle is based on the pressure drop caused by a contraction. Basing on the differential pressure of the flow the gas volume may be determined.

The CGZW Flowmeters are manufactured as single chamber fittings with removable orifice plate, and appropriate meter tubes. The fitting construction enables to access the orifice plate easily and quickly for inspection and replacement. It is not necessary to disassemble and spread flanges. One of characteristic features of the CGZW Flowmeters is easy control of leakages around the orifice plate.

Technical data:

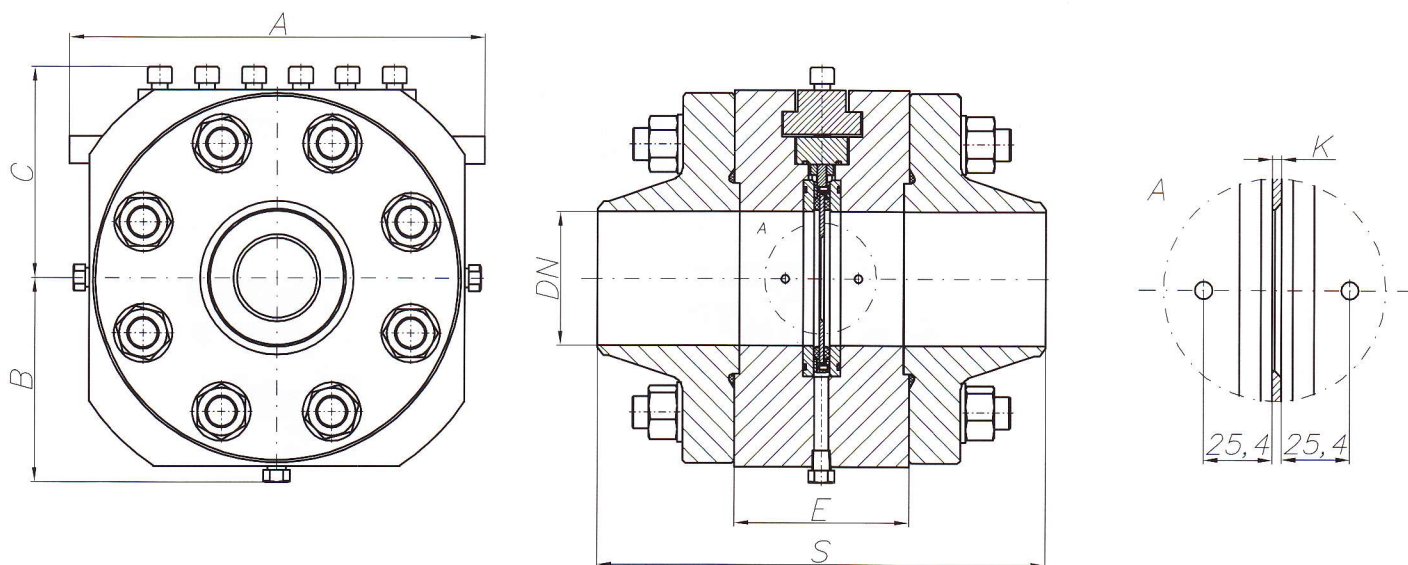
Nominal diameters:	from DN50 (2") up to DN400 (16")
Pressure range:	up to PN110
Connections:	welding neck or flanged
Temperature range:	- gas: -20°C ÷ +60°C
	- ambient: -25°C ÷ +70°C

The CGZW Flowmeter consists of three following assemblies:

- upstream meter tube,
- single chamber orifice fitting with removable orifice plate,
- downstream meter tube with two temperature wells.

The orifice fitting is provided with L" or " NPT openings for measurements of the differential pressure, and one drain opening.

The tables below contain overall dimensions and weights of the CGZW Orifice Fitting (welding neck from both ends).



Dimensions and weights (welding neck version):

DN		Dimensions						Weight*
		A	B	C	E	K	S	
mm	inch	mm	mm	mm	mm	mm	mm	kg
50	2	200	100	100	80	2,8	226	15
80	3	250	120	120	100	3,2	266	31
100	4	310	150	160	130	3,6	334	63
150	6	400	190	200	150	5	384	119
200	8	470	230	240	160	6	426	169
250	10	560	272	290	190	7,5	494	289
300	12	620	300	310	200	8,5	512	356
400	16	750	360	380	240	11	596	594

* Weights of the fitting with the orifice plate

COMMON S.A.

ul. Aleksandrowska 67/93

91-205 Łódź, Poland

tel.: 0048 42 253 66 00

mob.: +48 601 255 580

fax: 0048 42 253 66 99

e-mail: common@common.pl

internet: www.common.pl

